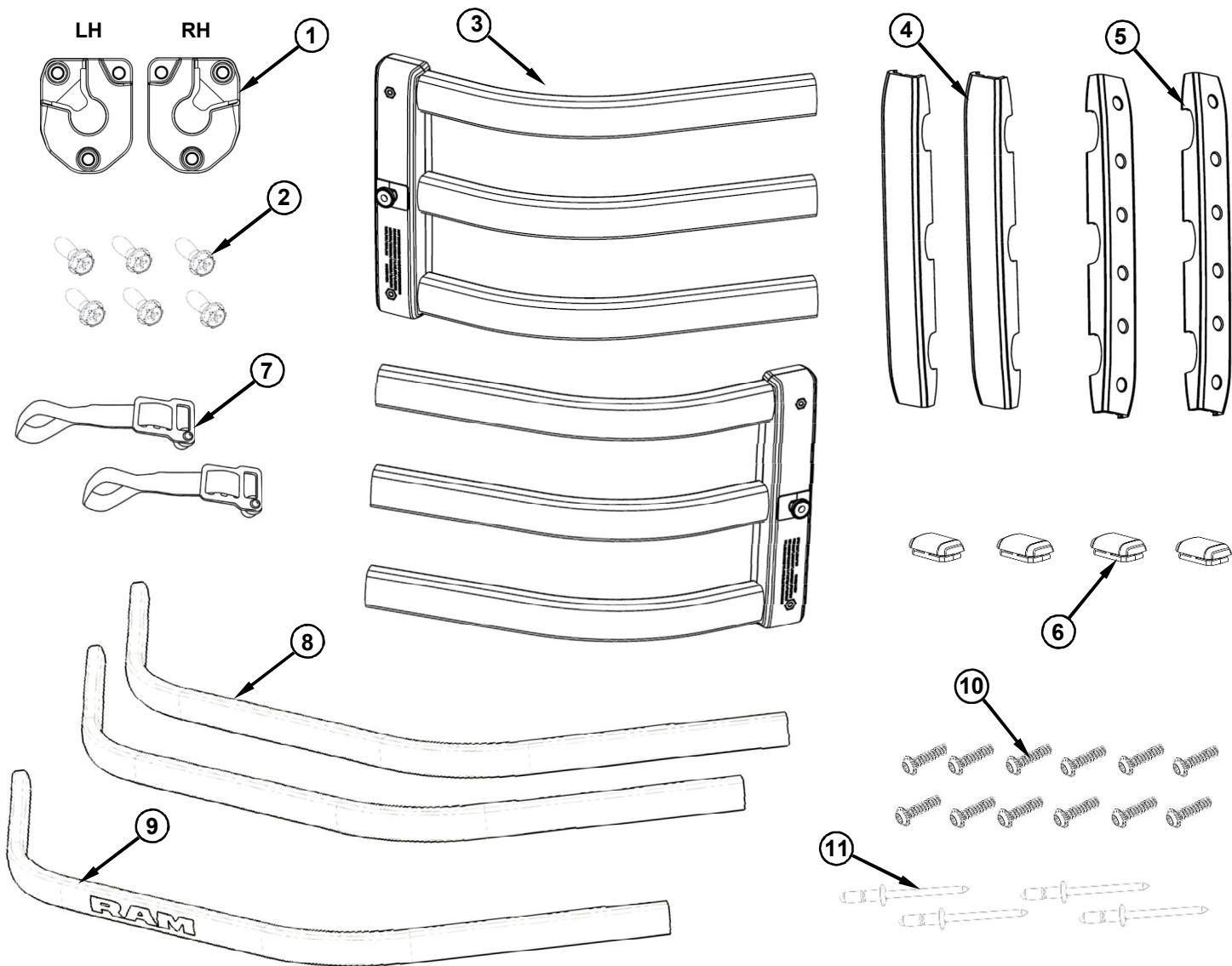


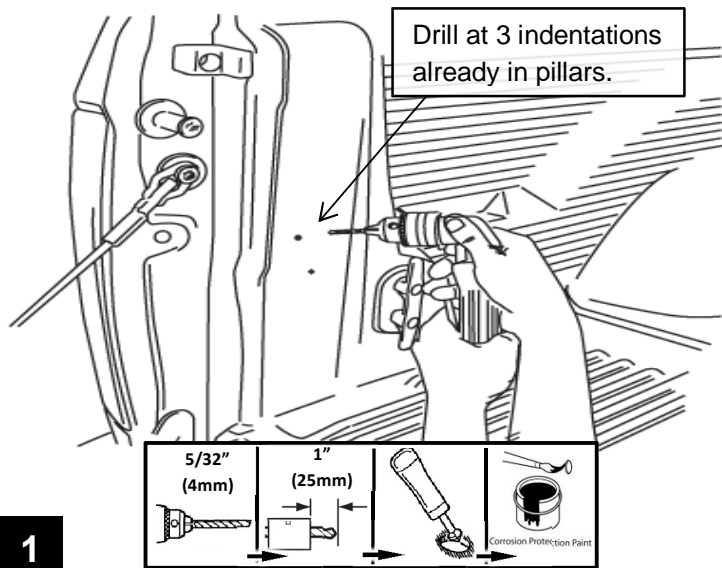


# RAM Bed Extender

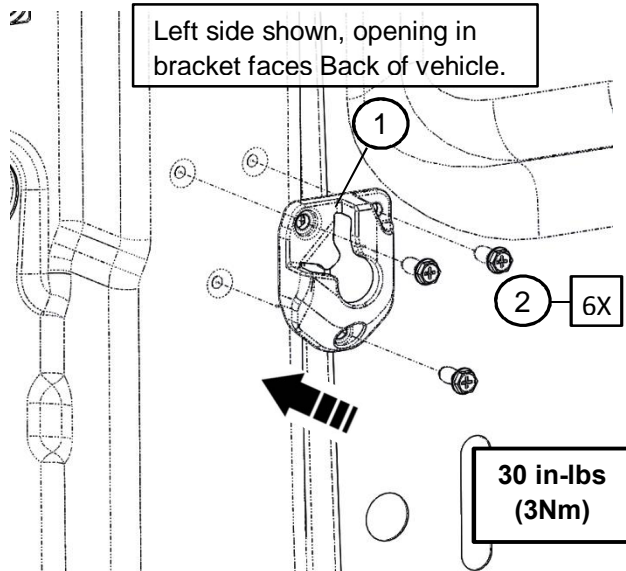
www.mopar.com



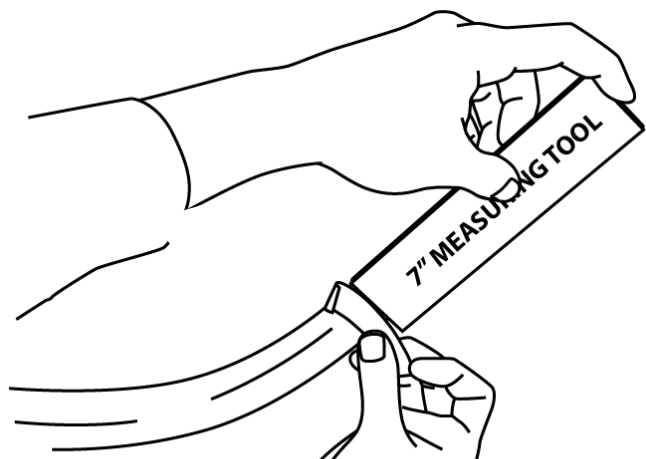
| Call Out | Description                    | Quantity | Service Part (Y/N) | Part Number |
|----------|--------------------------------|----------|--------------------|-------------|
| 1        | Mounting Bracket               | 2        | Y                  | 68260728AA  |
| 2        | Bracket Screw                  | 6        | Y                  |             |
| 3        | Pivot Section Assembly         | 2        | N                  |             |
| 4        | Bumper Upright Outer           | 2        | N                  |             |
| 5        | Bumper Upright Inner           | 2        | N                  |             |
| 6        | Bumper                         | 4        | N                  |             |
| 7        | Strap Buckle Assembly          | 2        | N                  |             |
| 8        | Center Tube (without RAM logo) | 2        | N                  |             |
| 9        | Center Tube (with RAM logo)    | 1        | N                  |             |
| 10       | PT Screw                       | 12       | N                  |             |
| 11       | Blind Rivet                    | 4        | N                  |             |



1

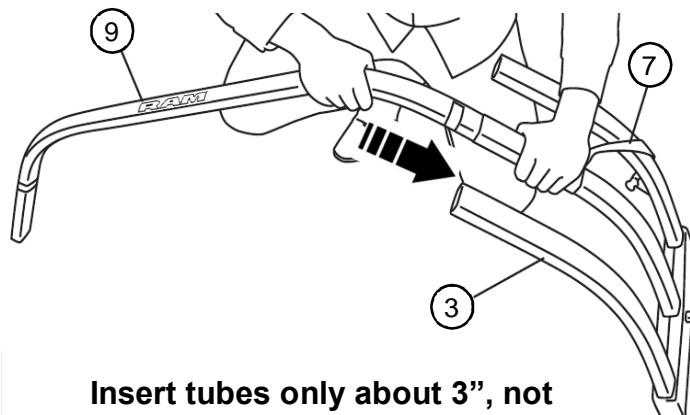


2

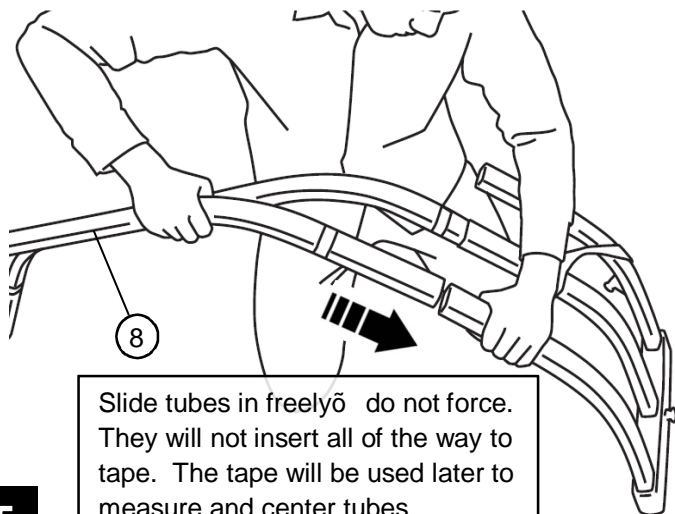


Use template (part of cardboard packaging) to measure 7" from each end of the three long tubes and mark with tape. Tape is to be used as reference point.

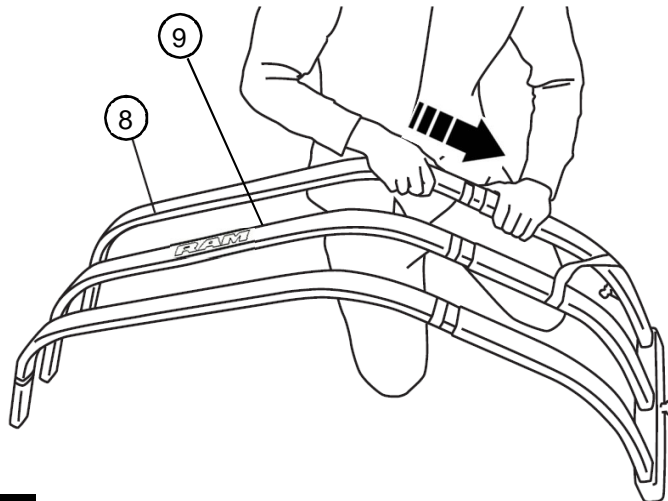
3



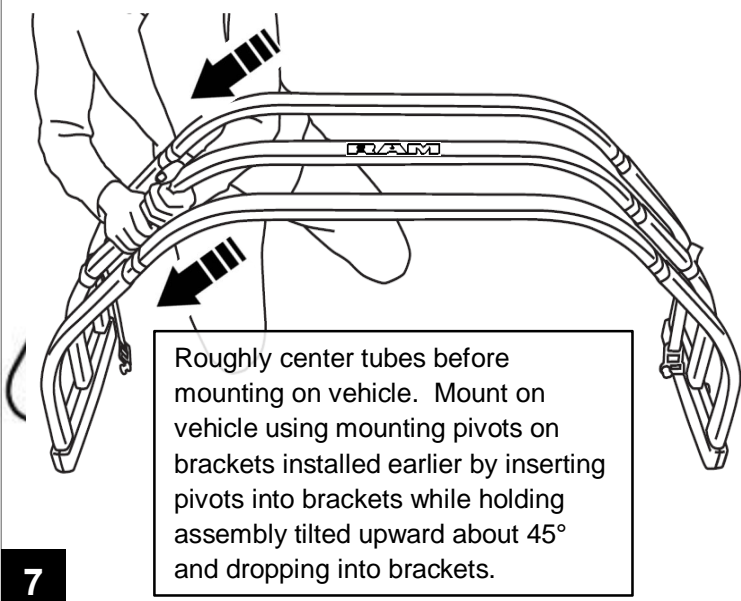
4



5

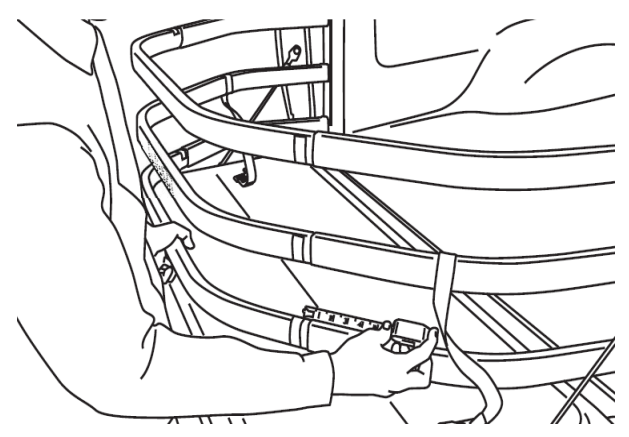


6



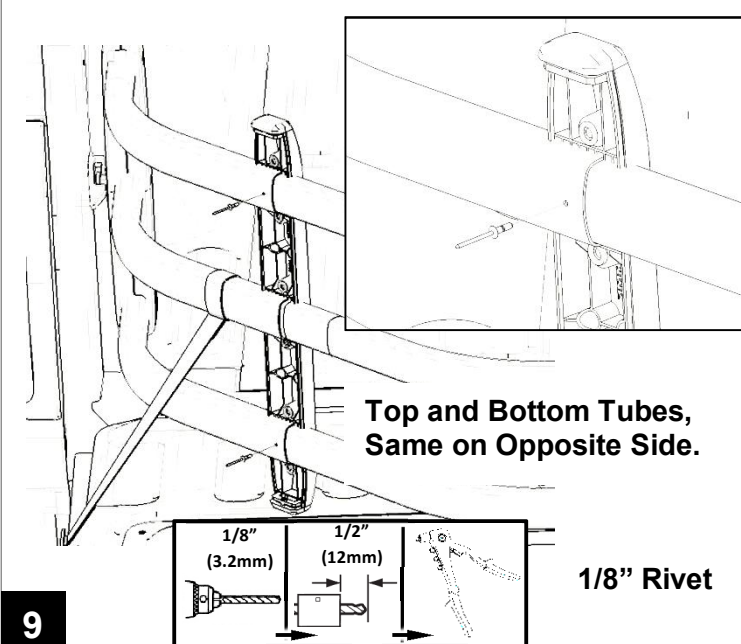
Roughly center tubes before mounting on vehicle. Mount on vehicle using mounting pivots on brackets installed earlier by inserting pivots into brackets while holding assembly tilted upward about 45° and dropping into brackets.

7

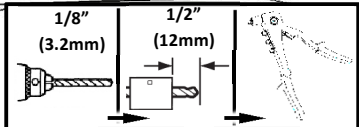


Mount Bed Extender and adjust each tube so that the gap between the edge and the tape is the same (approx. 3"-3.5").

8

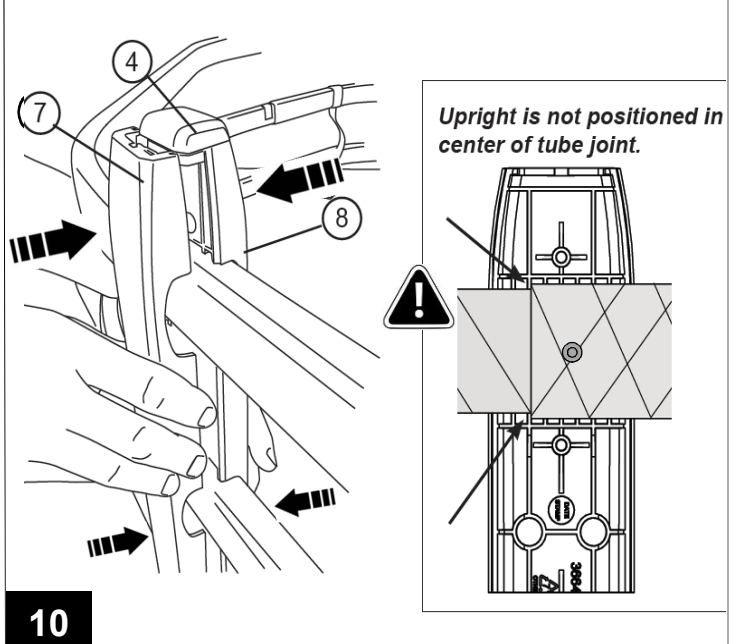


Top and Bottom Tubes, Same on Opposite Side.



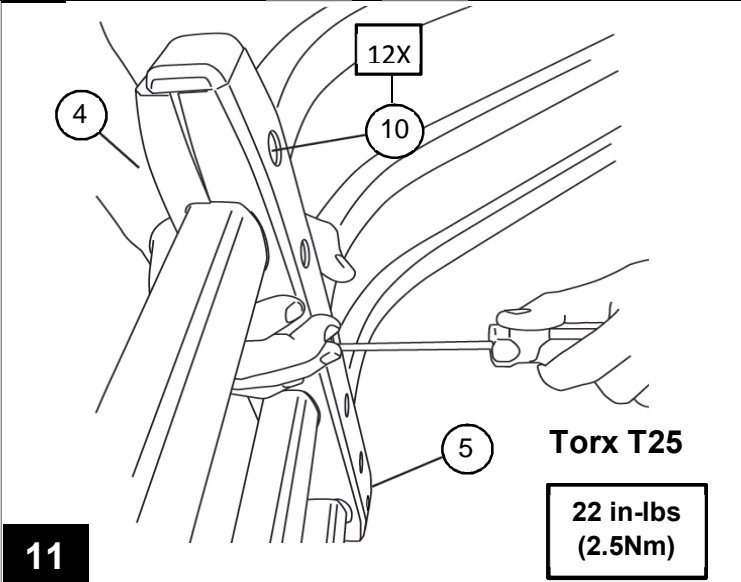
1/8" Rivet

9



Upright is not positioned in center of tube joint.

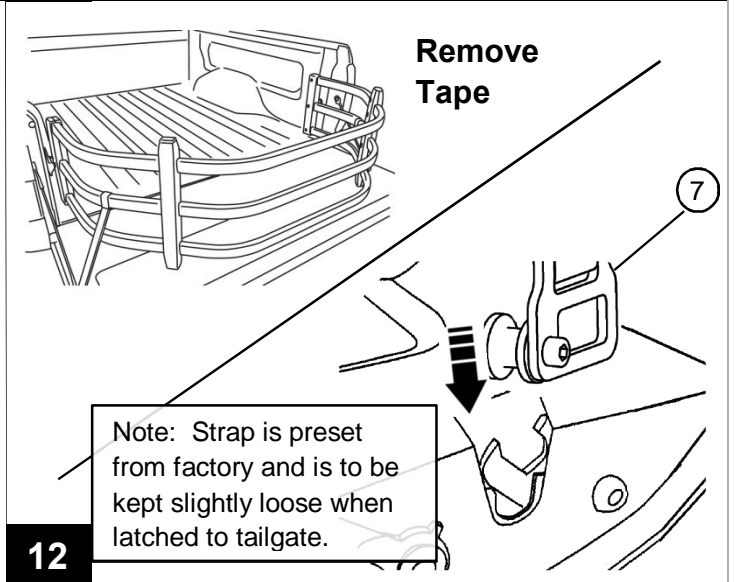
10



Torx T25

22 in-lbs (2.5Nm)

11



Remove Tape

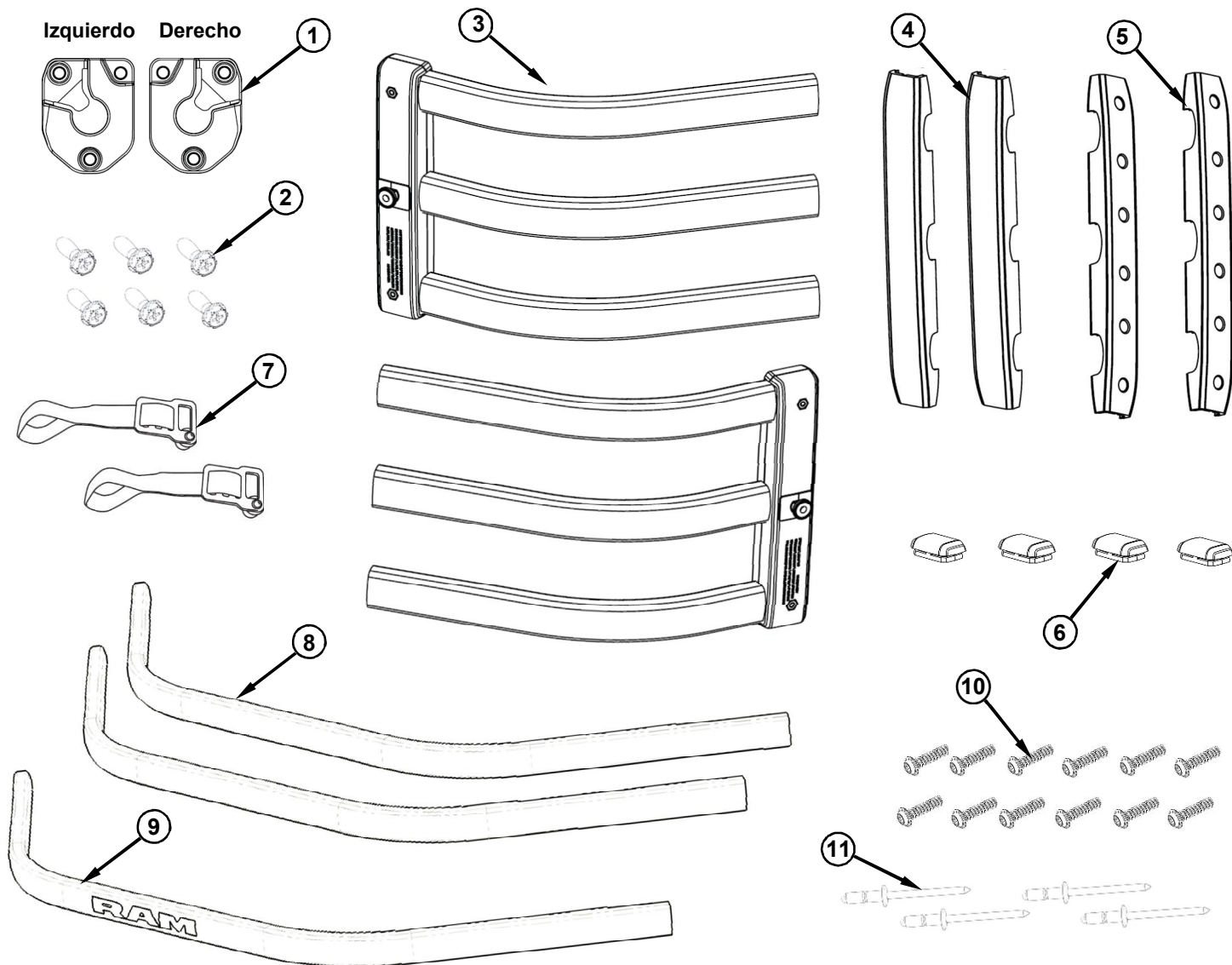
Note: Strap is preset from factory and is to be kept slightly loose when latched to tailgate.

12

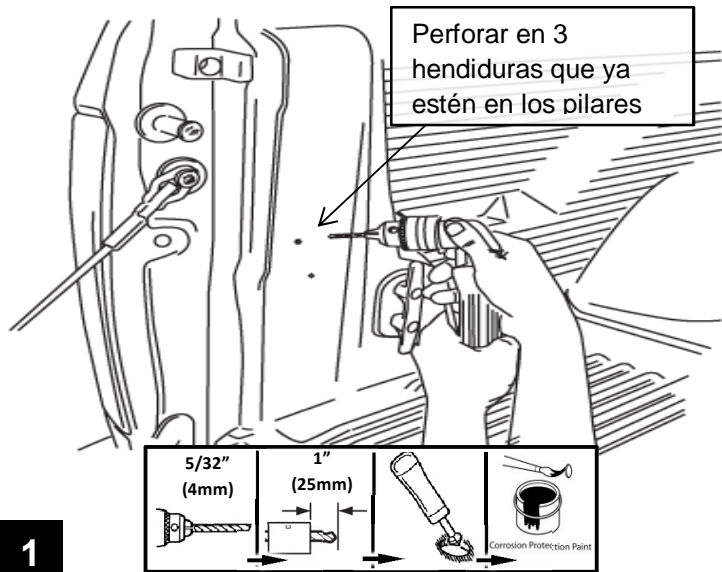


# Extensor de la caja de carga RAM

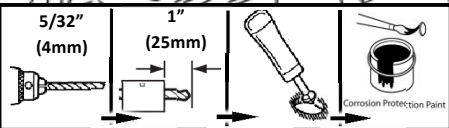
www.mopar.com



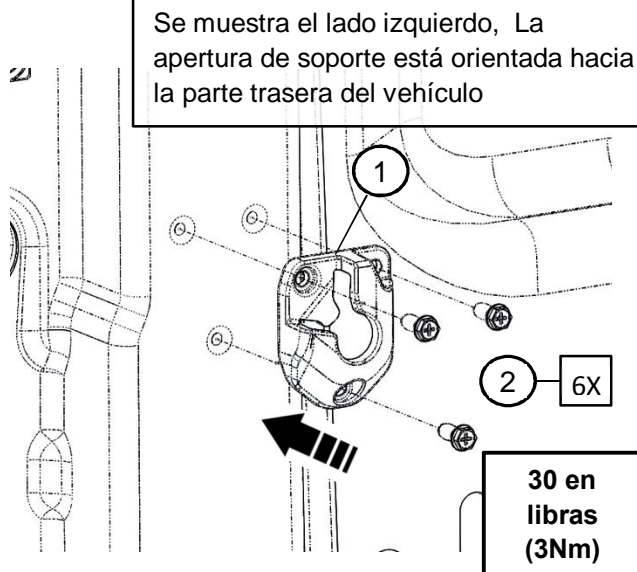
| Parte | Descripción                              | Cantidad | Pieza de repuesto (S/N) | Número de parte |
|-------|--|----------|-------------------------|-----------------|
| 1     | Soporte de montaje                       | 2        | S                       | 68260728AA      |
| 2     | Tornillo de soporte                      | 6        | S                       |                 |
| 3     | Montaje de sección de pivote             | 2        | N                       |                 |
| 4     | Cubierta exterior de la defensa vertical | 2        | N                       |                 |
| 5     | Cubierta interior de la defensa vertical | 2        | N                       |                 |
| 6     | Defensa                                  | 4        | N                       |                 |
| 7     | Kit de correa de abroche                 | 2        | N                       |                 |
| 8     | Tubo central (sin el logo RAM)           | 2        | N                       |                 |
| 9     | Tubo central (con el logo RAM)           | 1        | N                       |                 |
| 10    | Tornillo PT                              | 12       | N                       |                 |
| 11    | Remache ciego                            | 4        | N                       |                 |



Perforar en 3 hendiduras que ya estén en los pilares



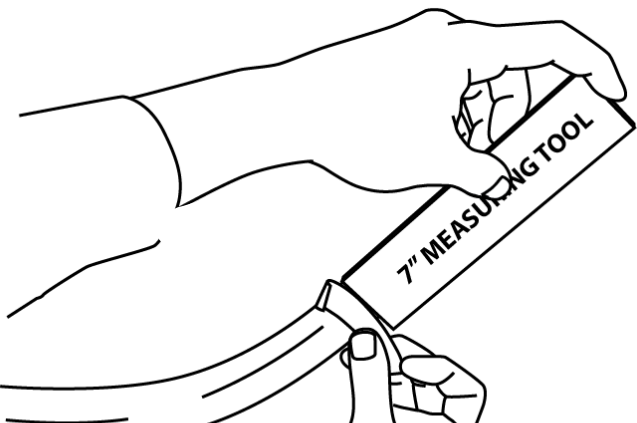
1



Se muestra el lado izquierdo, La apertura de soporte está orientada hacia la parte trasera del vehículo

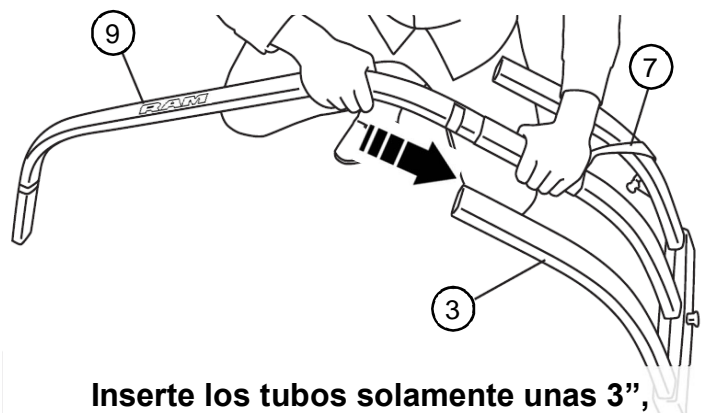
30 en libras (3Nm)

2



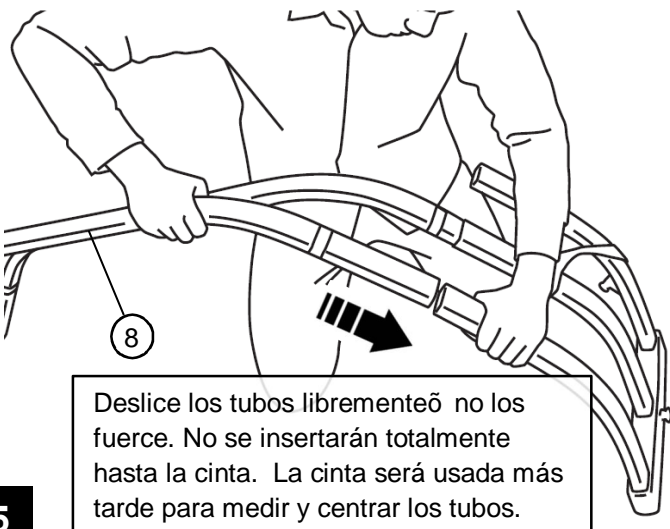
Utilice la plantilla (parte de la caja de cartón) para medir 7" de cada extremo de los tres tubos y marcar con cinta adhesiva. La cinta es utilizada como punto de referencia.

3



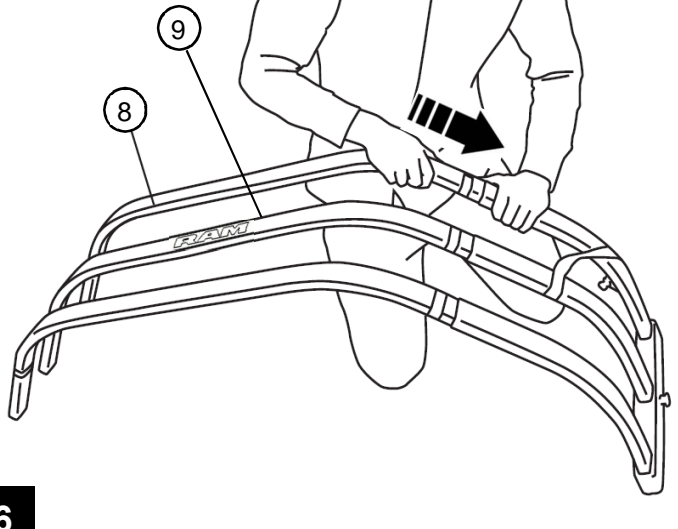
Inserte los tubos solamente unas 3", no totalmente hasta la cinta. La profundidad final se ajustará después.

4



Deslice los tubos libremente no los fuerce. No se insertarán totalmente hasta la cinta. La cinta será usada más tarde para medir y centrar los tubos.

5



6

**7**

Centrar más o menos los tubos antes de montar en el vehículo. Montar en el vehículo utilizando los pivotes de montaje en los soportes instalados anteriormente, insertando los pivotes en los soportes mientras sujeta el ensamble inclinado hacia arriba unos 45° y colocar en los soportes.

**8**

**Montar el extensor de la caja de carga y ajustar cada tubo para que el espacio entre el borde y la cinta sea el mismo (de aprox. 3"-3.5").**

**9**

Tubos de arriba y de abajo, Lo mismo en el lado opuesto.

1/8" (3.2mm) 1/2" (12mm)

1/8" Remache

**10**

En vertical no está posicionado en el centro de la unión del tubo.

**11**

Torx T25

22 en libras (2.5Nm)

**12**

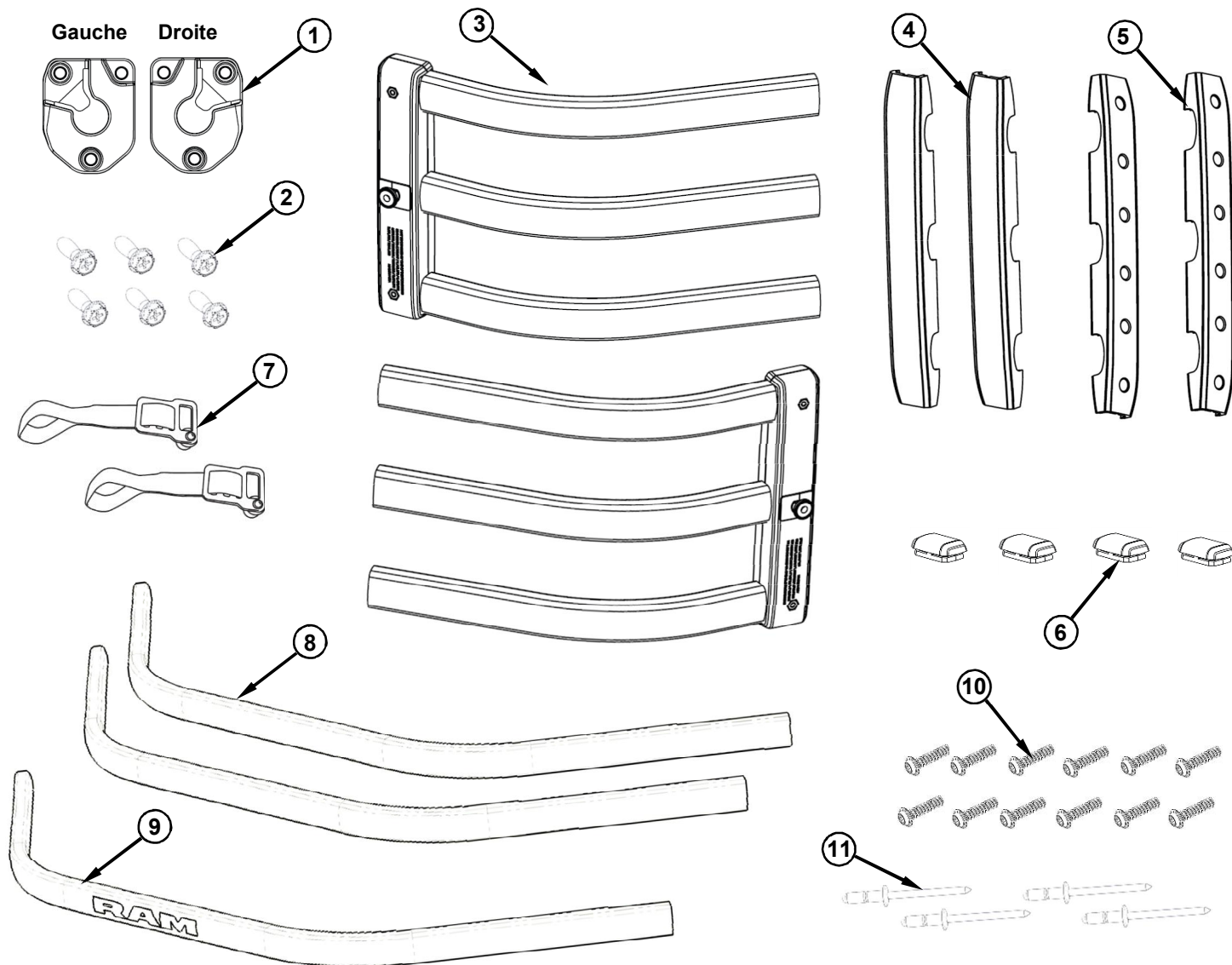
Quitar la cinta

Nota: La correa viene programada de fábrica y se debe mantener ligeramente suelta cuando se engancha a la puerta trasera.

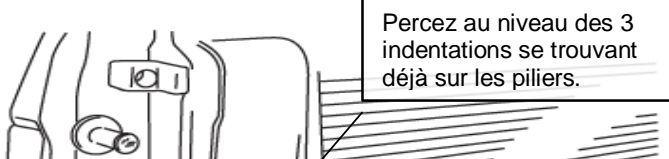


# Rallonge de Caisse RAM

www.mopar.com



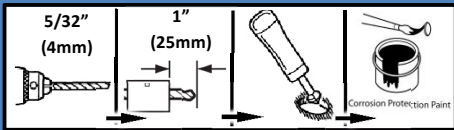
| Légende | Description                  | Quantité | Pièce de service (O/N) | Numéro de pièce |
|---------|------------------------------|----------|------------------------|-----------------|
| 1       | Support de fixation          | 2        | O                      | 68260728AA      |
| 2       | Vis de fixation              | 6        | O                      |                 |
| 3       | Système de pivot             | 2        | N                      |                 |
| 4       | Montant pare-choc externe    | 2        | N                      |                 |
| 5       | Montant pare-choc interne    | 2        | N                      |                 |
| 6       | Pare-choc                    | 4        | N                      |                 |
| 7       | Système de boucle de sangle  | 2        | N                      |                 |
| 8       | Tube central (sans logo RAM) | 2        | N                      |                 |
| 9       | Tube central (avec logo RAM) | 1        | N                      |                 |
| 10      | Vis PT                       | 12       | N                      |                 |
| 11      | Rivet aveugle                | 4        | N                      |                 |



Percez au niveau des 3 indentations se trouvant déjà sur les piliers.



Côté gauche illustré, l'orifice du support est orienté vers l'arrière du véhicule.



1

2

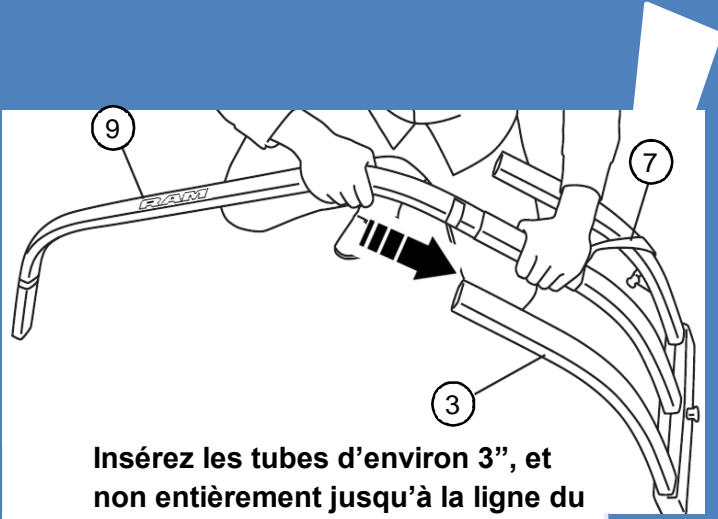
2 6X

30 pouces-livres (3Nm)

Utilisez le modèle (pièce en carton) pour mesurer 7" à partir de chaque extrémité des trois longs tubes, et marquez à l'aide du ruban. Le ruban doit être utilisé comme point de référence.

3

4



Insérez les tubes d'environ 3", et non entièrement jusqu'à la ligne du ruban. La profondeur finale sera ajustée ultérieurement.

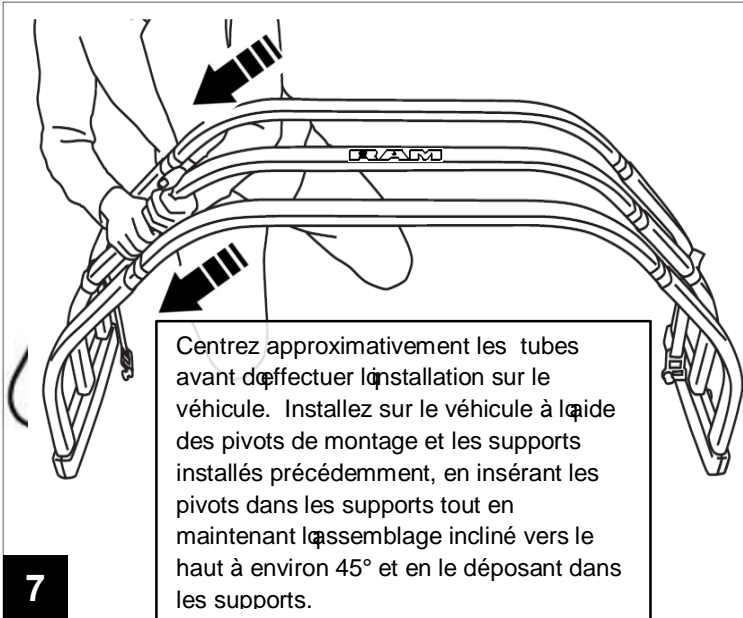


Faites glisser les tubes à l'intérieur, sans les forcer. Ils ne s'inséreront pas entièrement jusqu'au ruban. Le ruban sera utilisé ultérieurement pour mesurer et centrer les tubes.

5

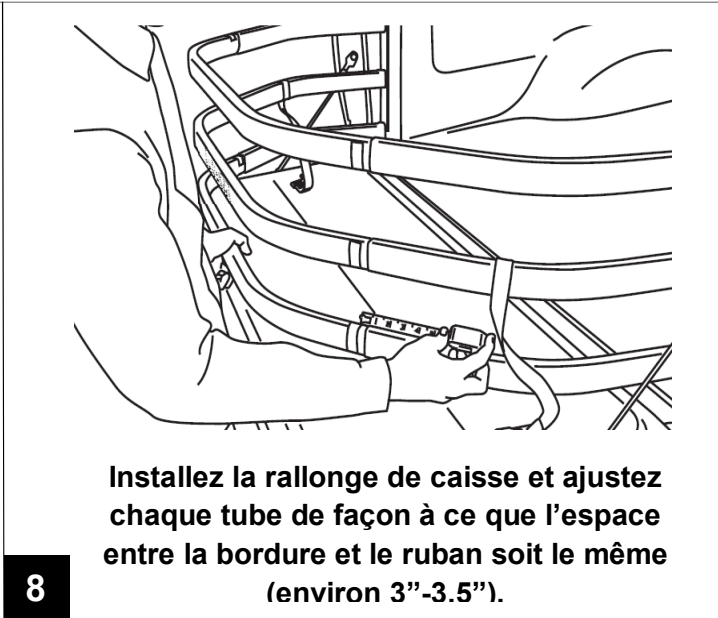
6





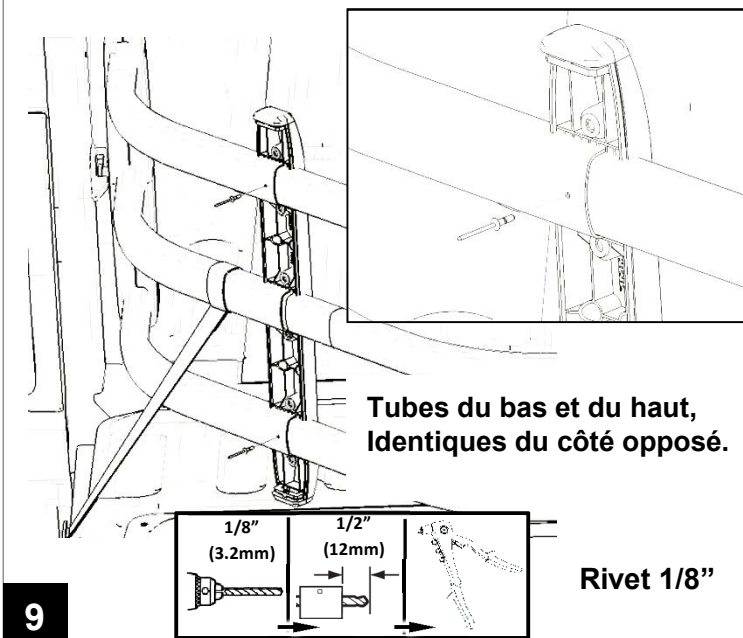
Centrez approximativement les tubes avant d'effectuer l'installation sur le véhicule. Installez sur le véhicule à l'aide des pivots de montage et des supports installés précédemment, en insérant les pivots dans les supports tout en maintenant l'assemblage incliné vers le haut à environ 45° et en le déposant dans les supports.

7

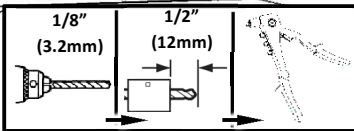


Installez la rallonge de caisse et ajustez chaque tube de façon à ce que l'espace entre la bordure et le ruban soit le même (environ 3"-3.5").

8

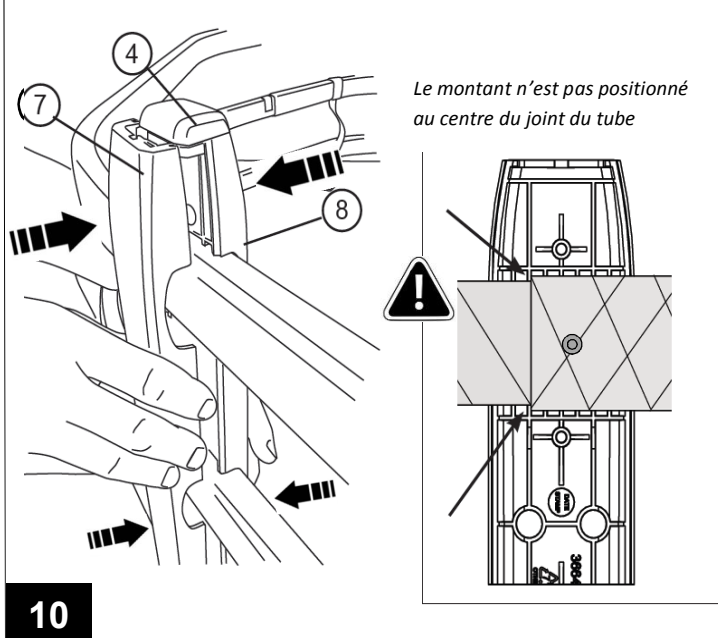


Tubes du bas et du haut, Identiques du côté opposé.



Rivet 1/8"

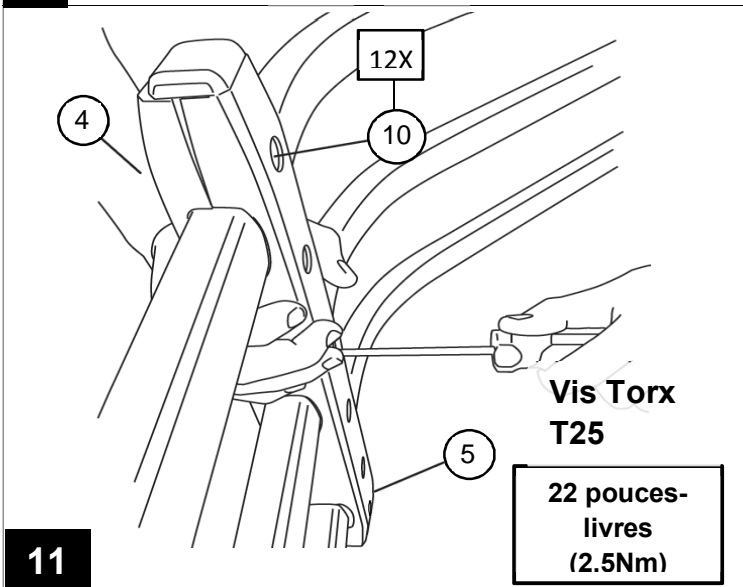
9



Le montant n'est pas positionné au centre du joint du tube



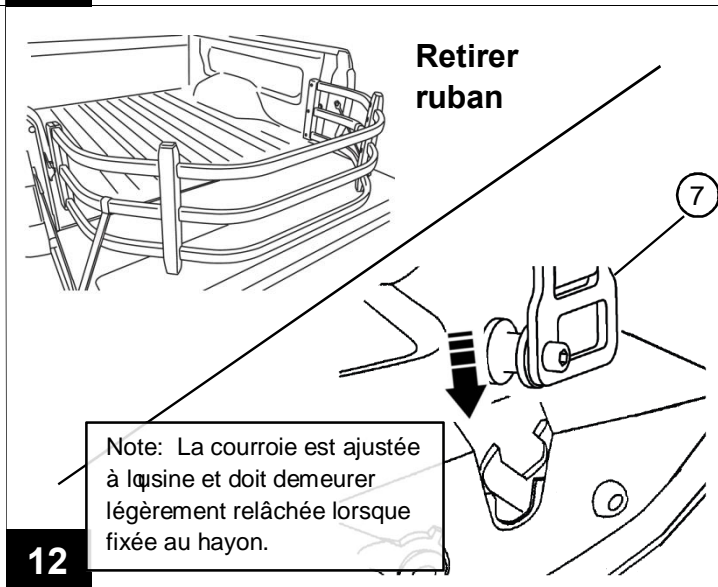
10



Vis Torx T25

22 pouces-livres (2.5Nm)

11



Retirer ruban

Note: La courroie est ajustée à la saine et doit demeurer légèrement relâchée lorsque fixée au hayon.

12